

All of the disassembly guides I've been able to find seem to have the same weakness; you have to gently finagle the circuit board out of the front half of the cover. This invariably results in breaking off the scroll wheel or the keylock switch, or both. Taking off the top case piece that surrounds the scroll wheel frees everything up so that you can open it easily like a pizza box.

Below is my step-by-step disassembly guide, exactly as I have done it numerous times now. With practice this should only take you about 5-10 minutes, start to finish. If you want larger versions of the images imbedded here, you can download them from the Depot page on my website.

## STEP 1: GET READY

Familiarize yourself with your player (1a). Look at it closely and identify all the components from my Illustrated Parts Breakdown (1b). Prepare your work area; lay down a towel or cloth on a level surface, get lots of light, some plastic tubs for parts, your tools (see Recommended Tools & Supplies), and a comfy chair.



## STEP 2: REMOVE SIDE GRIP

First, use your #0 Phillips screwdriver to remove the two machine screws on the bottom of the player (2a). Then grip the player in your left hand and the side grip in the right, and pull it sideways firmly (2b). It will pop off if you pull hard enough (2c). Now you should see this – (2d).





2c.



2d.

### STEP 3: REMOVE LENSE

First cover the tip of your putty knife with some thin soft cloth (I use a piece of old cotton shirt). This will help keep you from scratching the backside of the lens (3a). Then, starting at the lower right corner (3b), work the putty knife in underneath the lens. Gently work the putty knife counterclockwise around the outside edge of the lens (3c), twisting slightly as you go to pry the lens up off of its double-backed tape. Once you've made it all the way around to the top (3d), you should be able to pry with your fingers and/or putty knife to get the lens completely free (3e), leaving you with this – (3f).

**Note:** If you do scratch the backside of the lens, you can use a black felt tip marker to blacken over the scratch. With the lens back on, the scratch will be practically invisible.

**Warning:** Do not push the putty knife in far enough to touch the LCD or else you will scratch it. The anti-glare coating on the LCD scratches easily.



3a.



3b.



3c.



3d.



3e.



3f.

#### STEP 4: REMOVE TOP CASE

To remove the top case, you will have to start by using your #0 Phillips screwdriver to remove the screw near the nipple (4a), and the one in the upper right-hand corner (4b). With those two screws removed, you can pull upwards on the right-hand end of the top case (4c), and pop it off (4d) over the scroll wheel, leaving you with this – (4e). The power button sits loose between the front case and top case, so with the top case off, the power button may fall out.

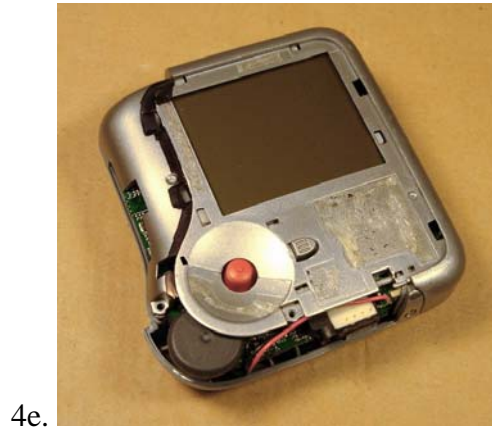
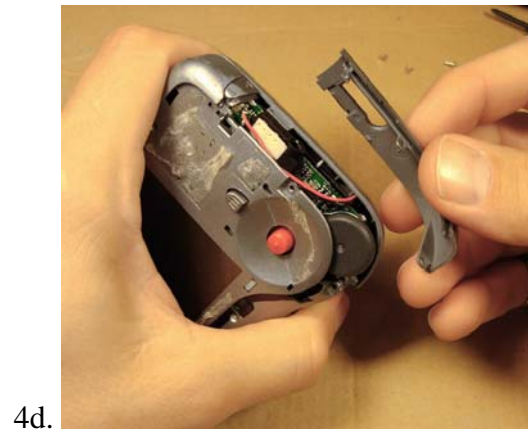


4a.



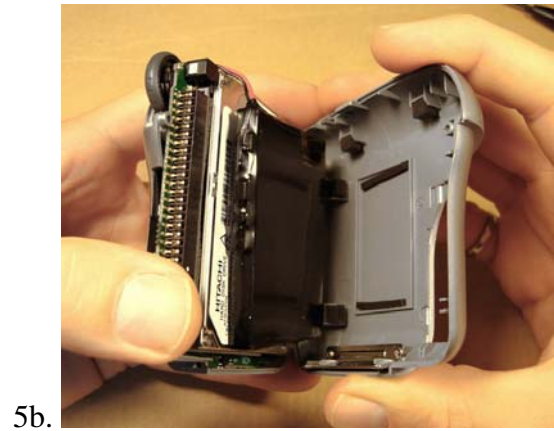
4b.





#### STEP 5: REMOVE BACK CASE

After the removal of the top case, the back case will come off freely. It hooks together with the front case along left-hand edge, so swing it open like a pizza box as shown in 5a & 5b, leaving something like 5c.

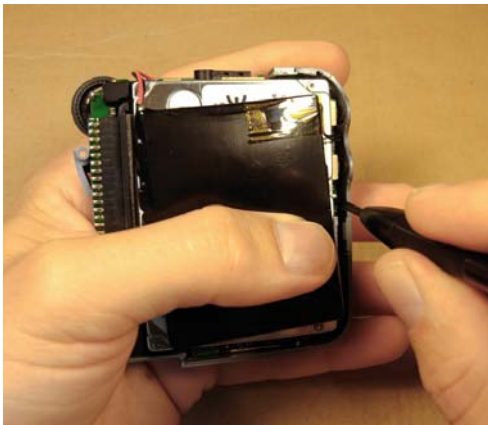




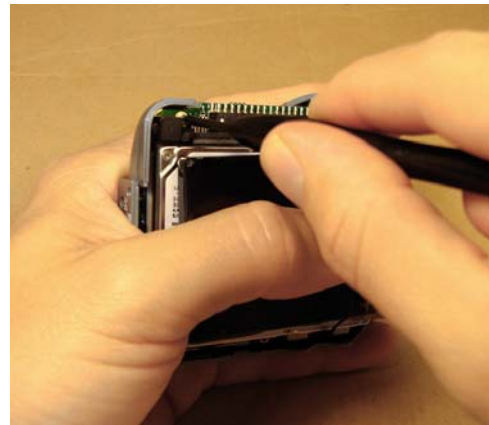
5c.

## STEP 6: REMOVE FRONT CASE

With your #0 Phillips screwdriver, remove the two screws holding the main board to the front case (6a & 6b). Now here is the tricky part: hold the main board + hard drive assembly in your left hand, and the front case in your right (6c). Use your right thumb to flex the right side of the case outward as you lift the top edge of the main board towards you. Keep a close eye on the keylock switch. You are flexing the case outwards to help keep from snapping the keylock switch off. Once the keylock switch is clear of the case, continue to separate the main board from the case, bottom edge last. The various connectors on the bottom of the player are inset a bit in the case so you will have to pull them out to clear the case (6e), leaving the main board free (6f).



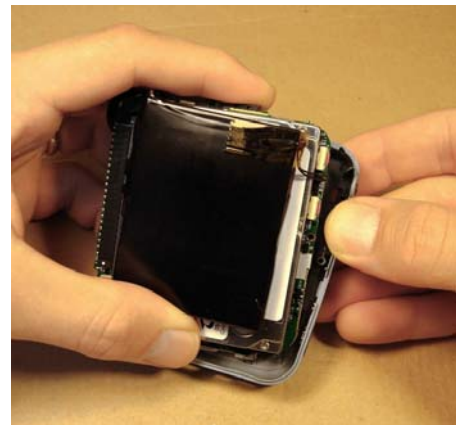
6a.



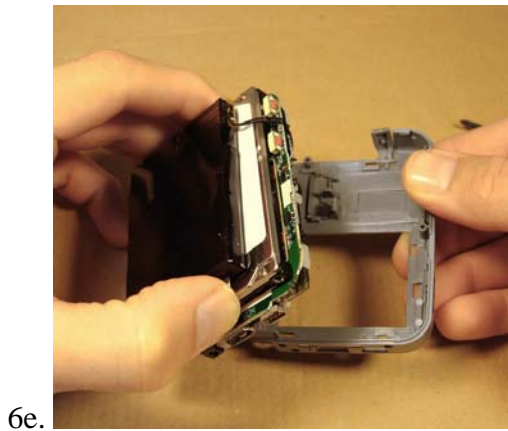
6b.



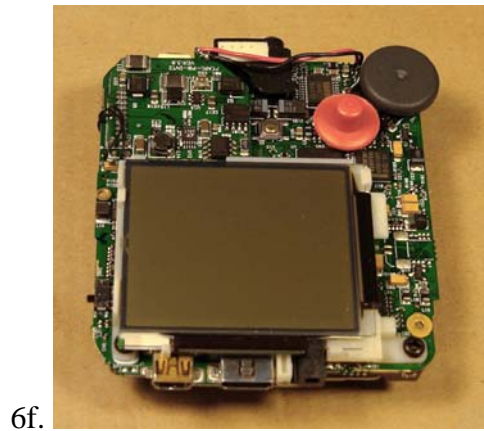
6c.



6d.



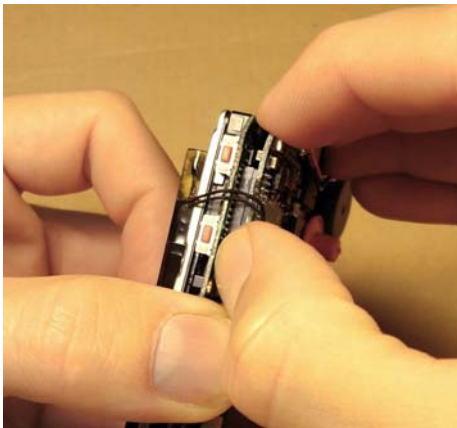
6e.



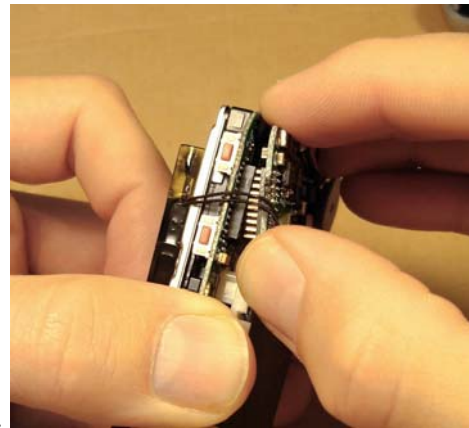
6f.

## STEP 7: REMOVE BATTERY

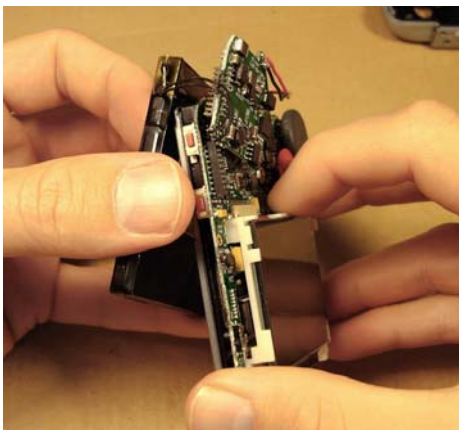
Locate the battery daughter board in the upper left corner of the main board. Grip the daughter board and gently but firmly pull it away from the main board (7a). You may have to rock it from side to side as you pull it free of its connector (7b). Once the daughter board is free of its connector, slip the battery up over the main board (7c), leaving you with this – 7d.



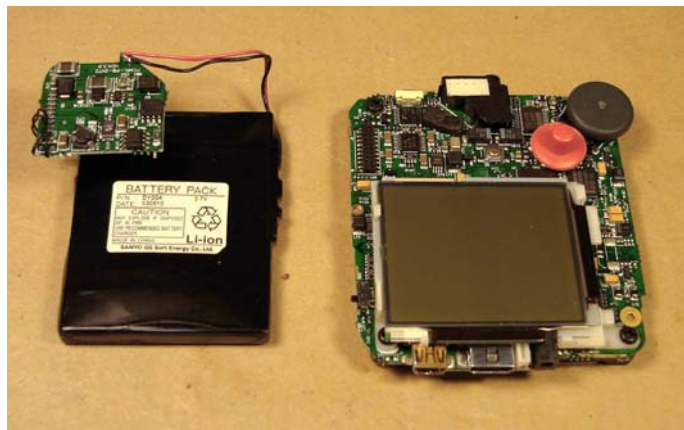
7a.



7b.



7c.



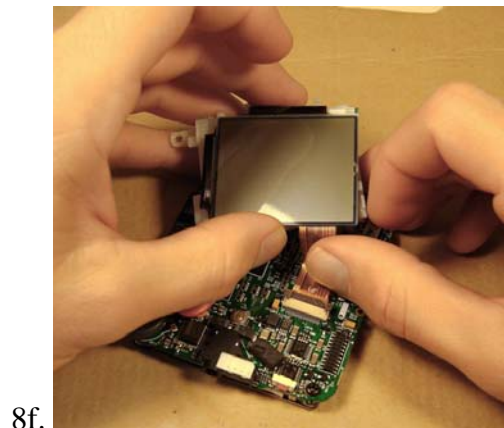
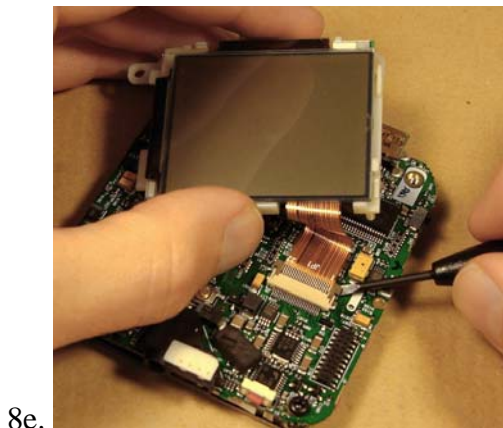
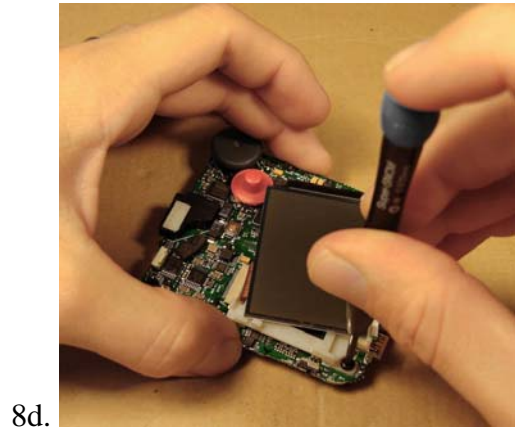
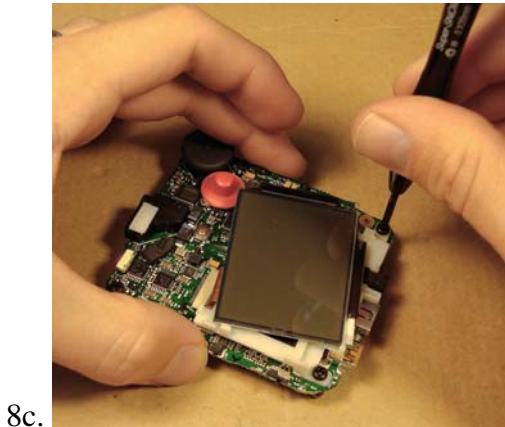
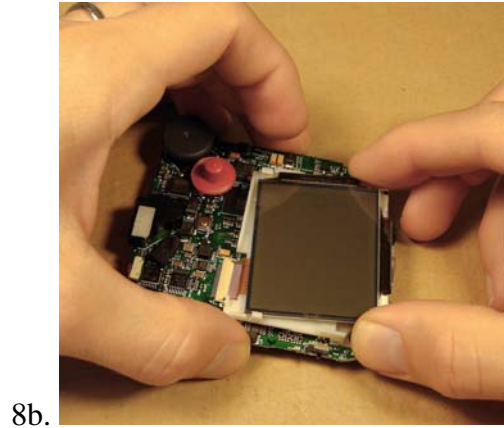
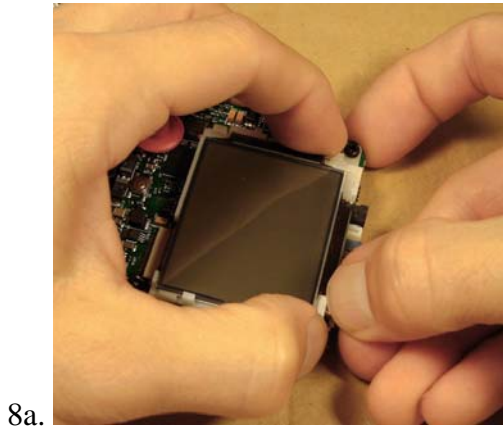
7d.

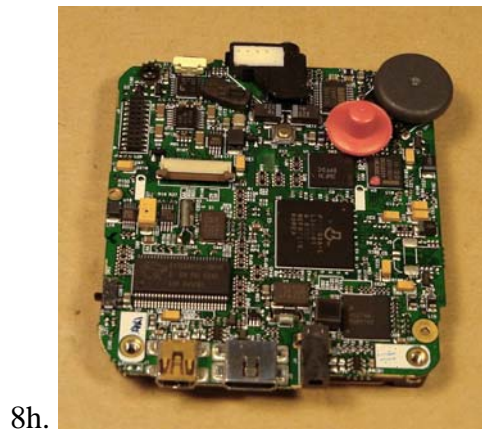
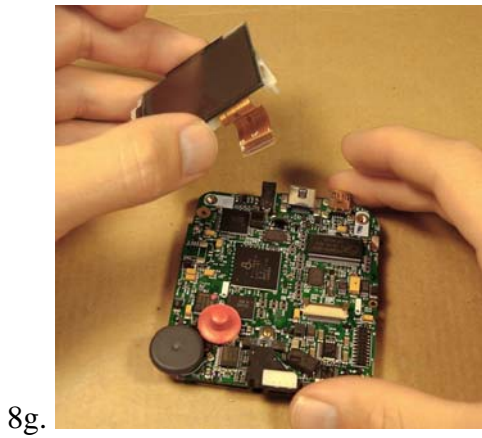
## STEP 8: REMOVE LCD

Use your fingernail to pull the two white plastic tabs out at the bottom of the LCD just enough to pull the bottom of the LCD up free of them (8a). Be careful not to pull too hard or you will break the tabs, especially the one on the left side. With the bottom of the LCD free, pull it downwards just enough to free it from the white plastic tabs on either side (8b). Leaving the LCD loose, use your #0 Phillips screwdriver to remove the two screws at the bottom of the LCD (8c & 8d). Then use a



screwdriver or fingernail to pull up the brown lever on the LCD ZIF connector (8e), then use your finger to pull the LCD's ribbon cable free of the connector (8f). Put the LCD somewhere safe (8g), maybe wrapping it in soft cloth as it scratches easily. You are now left with the main board and hard drive (8h).





## STEP 9: REMOVE HARD DRIVE

Remove the last remaining screw in the upper left corner (9a). Turn the main board over so the drive is facing up, and lift the free edge (opposite the side with the connector) up just enough to clear the volume switches (9b). Gently but firmly pull the drive out of the connector, rocking it back and forth as you go (9c). Your drive is now free (9d) and you are left with a lone main board. Your finished!

